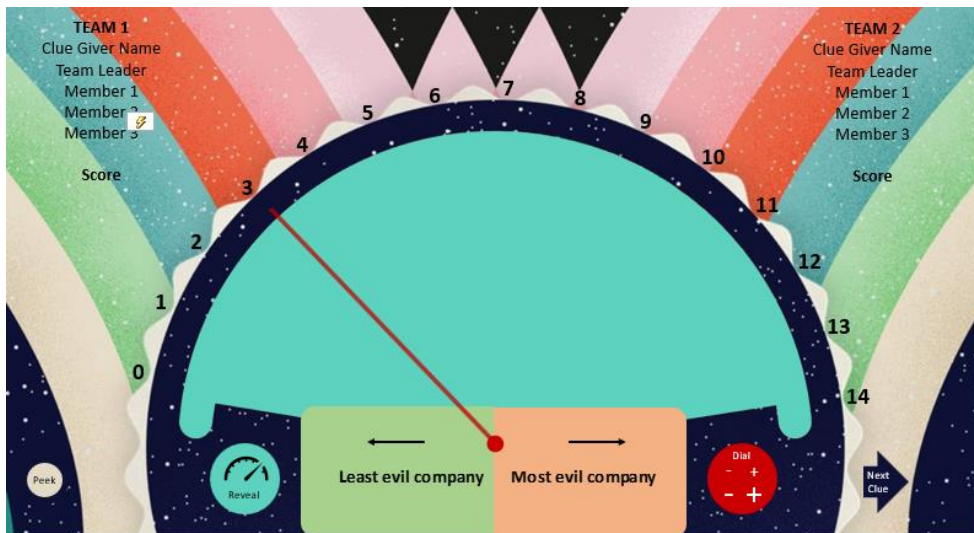
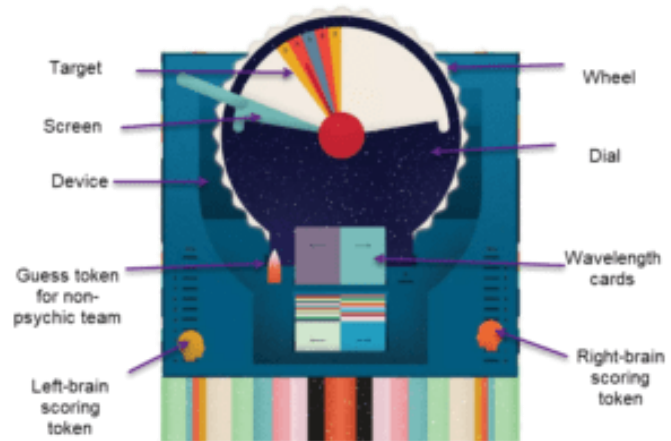
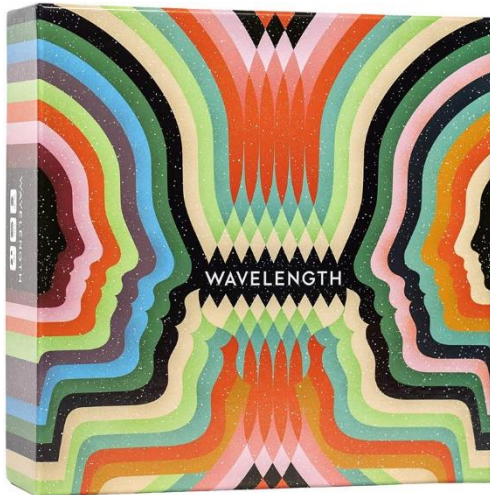


## Wavelength Images, Video Links & Play Information



YouTube Video Links:

<https://youtu.be/NS9zofA1ouM>

<https://youtu.be/4lwGkSiEHeA>

Number of Players: 2-12 Players (Best: 6 or 8)

Ages: 14 and Up

Play Time: 30-45 Minutes

### Wavelength Images, Video Links & Play Information

**Wavelength:** *Wavelength* is a social guessing game in which two teams compete to read each other's minds. Teams take turns rotating a dial to where they think a hidden bullseye is located on a spectrum. One of the players on your team — the Psychic — knows exactly where the bullseye is and draws a card with a pair of binaries on it (such as: Job - Career, Rough - Smooth, Fantasy - Sci-Fi, Sad Song - Happy Song, etc.). The Psychic must then provide a clue that is \*conceptually\* where the bullseye is located between those two binaries.

For example, if the card this round is HOT-COLD and the bullseye is slightly to the "cold" side of the center, the Psychic needs to give a clue somewhere in that region. Perhaps "salad"?

After the Psychic gives their clue, their team discusses where they think the bullseye is located and turns the dial to that location on that spectrum. The closer to the center of the bullseye the team guesses, the more points they score!

Source: <https://boardgamegeek.com/boardgame/262543/wavelength>